

259002

Women's Crossover Lab Coat

- Adjustable waist ties
- Side opening to pass waist tie
- Darts on chest
- **One pocket:** 1 welt pocket, hidden when the garment is closed

Poplin. 65% polyester - 35% cotton / 105 gsm

S / M / L / XL

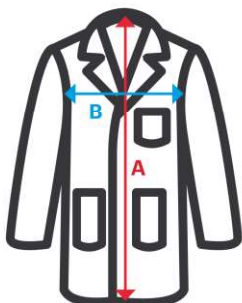
07 01 02

07 White / 01 Dark Blue / 02 Green



| Sizes | Centre back length | Chest 1/2 |
|-------|--------------------|-----------|
| S | 91,9 | 50 |
| M | 92,7 | 54 |
| L | 93,5 | 58 |
| XL | 94,3 | 62 |

Dimensions in cm.



- **A:** Centre back length
- **B:** Chest 1/2



Distributed by:

