



HEAT PRO gloves

Distributed by:



Body protection: aluminised clothing

Description and composition:

Aluminised suede gloves (cowhide) orange coloured palms: Level 2 cut resistance.

Rest of the glove in **aluminised para-aramid**.

Inner lining **100% cotton**: soft and comfortable.

This combination of materials provides resistance to heat, perforation and a great dexterity in handling pieces.

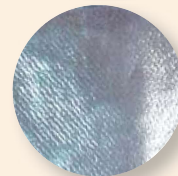
The pieces are sewn together with Kevlar thread, resistant to high temperatures.

Sizes: 8, 9, 10 and 11.

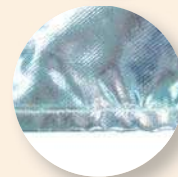
Category III



Suede palm: Anti-cut 2

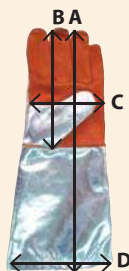


Aluminised fabric



Sewn with Kevlar thread


| Ref: | Size | MEASUREMENTS | | | |
|--------|------|--------------|------|------|----|
| | | A | B | C | D |
| 912318 | 8 | 41 | 19,5 | 12,5 | 18 |
| 912311 | 9 | 42 | 20,5 | 13 | 19 |
| 912310 | 10 | 43 | 20,5 | 13,5 | 20 |
| 912319 | 11 | 44 | 22 | 14,5 | 21 |



| Mechanical | 1 | 2 | 3 | 4 | | |
|------------|---|---|---|---|---|---------------------------------|
| | 1 | 2 | 3 | 4 | 5 | Resistance to blade cuts (palm) |
| | 1 | 2 | 3 | 4 | | Tearing (palm) |
| | 1 | 2 | 3 | 4 | | Perforation (palm) |

| Thermal risks | 1 | 2 | 3 | 4 | | |
|---------------|---|---|---|---|---------------------------------------|---------------------------------------|
| | 1 | 2 | 3 | 4 | | Flame resistance (palm and back) |
| | 1 | 2 | 3 | 4 | | Contact heat (palm) |
| | 1 | 2 | 3 | 4 | | Convective heat (palm) |
| | 1 | 2 | 3 | 4 | | Radiant heat (back) |
| | 1 | 2 | 3 | 4 | | Small splashes of molten metal (back) |
| 1 | 2 | 3 | 4 | | Large splashes of molten metal (back) | |

Body protection: aluminised clothing

| Standard and certification | 89/686/CEE directive, transposed in Royal Decree 1407/1992, according to regulations UNE-EN 420:2004+A1:2010+ERRATUM 2011, UNE-EN 388:2004 and UNE-EN 407:2005. | | | | | | | | | | | | | | | | |
|--|---|------------------------|---------------------|------------------------|--------|---------------|----------------|--------|---------------|----------------|---------|---------------|----------------|---------|---------------|----------------|---|
| Applications | Specially recommended for workstations with a higher risk of abrasion and ones that require more dexterity when handling objects. Highly appropriate for handling pieces at 100 °C for long periods. They protect against spillage and small splashes of molten metal. PPE for industrial use: foundries, metal industry, pyrotechnics, furnace repair, cement works, steelworks etc. | | | | | | | | | | | | | | | | |
| Conservation Storage - Expiry | Do not store near chemical contaminants nor when the fabric is wet. Avoid exposure to daylight. Store in a dry, well ventilated, place. If the gloves get wet, dry in a well ventilated place. | | | | | | | | | | | | | | | | |
| Directions Use | Correct performance of the garment requires it to be correctly adjusted. This equipment is for personal use and should not be used by several people. For safety reasons, always carry out a visual inspection of the product before use. | | | | | | | | | | | | | | | | |
| Presentation | Individually packed: 1 pair 50 unit carton Carton size: 45 x 41.5 x 35.5 | | | | | | | | | | | | | | | | |
| Bar code | <table border="1"> <thead> <tr> <th></th> <th>Box bar code</th> <th>Carton bar code</th> </tr> </thead> <tbody> <tr> <td>Size 8</td> <td>8423173884321</td> <td>58423173884326</td> </tr> <tr> <td>Size 9</td> <td>8423173884260</td> <td>58423173884265</td> </tr> <tr> <td>Size 10</td> <td>8423173884253</td> <td>58423173884258</td> </tr> <tr> <td>Size 11</td> <td>8423173884338</td> <td>58423173884333</td> </tr> </tbody> </table> | | Box bar code | Carton bar code | Size 8 | 8423173884321 | 58423173884326 | Size 9 | 8423173884260 | 58423173884265 | Size 10 | 8423173884253 | 58423173884258 | Size 11 | 8423173884338 | 58423173884333 | <p>Distributed by:</p>  |
| | Box bar code | Carton bar code | | | | | | | | | | | | | | | |
| Size 8 | 8423173884321 | 58423173884326 | | | | | | | | | | | | | | | |
| Size 9 | 8423173884260 | 58423173884265 | | | | | | | | | | | | | | | |
| Size 10 | 8423173884253 | 58423173884258 | | | | | | | | | | | | | | | |
| Size 11 | 8423173884338 | 58423173884333 | | | | | | | | | | | | | | | |

Please get in touch for availability of sizes 6 and 7.

