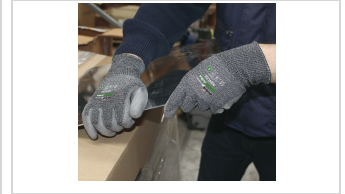


GUANTE GUANTES DE PU JUBA - NX4C00 NINJA X4 COMFORT

10 gauge shell blended on Nylon®, synthetic yarn and fiberglass liner with PU coating on palm and fingers.



Distributed by:



NORMATIVE



CHARACTERISTICS

- Blend of a layer of fibreglass lining with an outer Nylon® layer to provide cut protection.
- PU palm coating for extra dexterity, tactility " and comfort.
- Sure grip on dry conditions.
- Excellent resistance to abrasion.
- The Sanitized® hygiene function protects gloves from the formation of fungi, mites and bacteria, prevent odors, provides long-lasting material protection to polymers and minimize skin irritation.

Uses

- Glass sector.
- Parts assembly.
- Metal sheets handling.
- Plastics handling.
- Pulp & paper industry.

MORE INFO

Materials	Colour	Thickness	Length	Sizes	Packaging
Polyurethane	Mottled / Black	Gauge 10	XS - 22 cm S - 23 cm M - 24 cm L - 25 cm XL - 26 cm XXL - 27 cm	6/XS 7/S 8/M 9/L 10/XL 11/XXL	12 pairs/package 144 pairs/box

NORMATIVAS

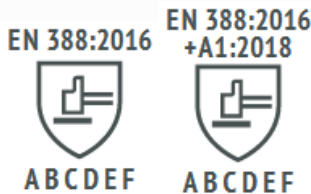
EN388:2016



EN388:2016 Protective gloves against mechanical risks.

The EN388: 2003 standard is renamed EN388: 2016, the year of its revision. The reason for the modification is given by the discrepancies in the results between laboratories in the knife cut test, COUP TEST. Materials with high levels of cut produce a dulling effect on the circular blades, which undermines the result.

The new regulation was published in November 2016 and the previous one is from the year 2003. During these 13 years, there has been a great innovation in the materials for the manufacture of cutting gloves, they have forced to introduce changes in the tests to be able to measure with more rigorous levels of protection. If you want to know more about the main changes in these regulations, you can consult it through our website www.jubappe.es



- A - Abrasion resistance (X, 0, 1, 2, 3, 4)
- B - Blade Cut Resistance (X, 0, 1, 2, 3, 4, 5)
- C - Tear resistance (X, 0, 1, 2, 3, 4)
- D - Puncture resistance (X, 0, 1, 2, 3, 4)
- E - Cutting by sharp objects ISO 13997 (A, B, C, D, E, F)
- F - Impact test complies / does not comply (It is optional. If it complies, put P)

En388:2016 performance levels	1	2	3	4	5
6.1 abrasion resistance (cycles)	100	500	2000	8000	-
6.2 blade cut resistance (index)	1,2	2,5	5	10	20
6.4 tear resistance (newtons)	10	25	50	75	-
6.5 puncture resistance (newtons)	20	60	100	150	-

Eniso13997:1999 performance levels	A	B	C	D	E	F
6.3 tdm: cut resistance (newtons)	2	5	10	15	22	30

Distributed by:

